



**RAWLINSON  
&WEBBER.**

Churchfields, West Molesey  
£2,750 Per Calendar Month Freehold

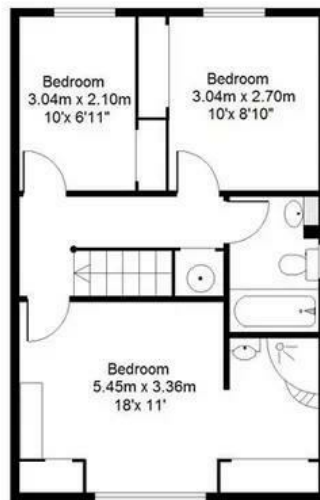
RAWLINSON  
&WEBBER



Ground Floor



First Floor



Not to scale

## Property Description

Welcome to Churchfields, West Molesey – a charming and spacious 3-bedroom link-detached property perfect for modern family living. This beautifully maintained home offers a blend of comfort, functionality, and style across its versatile spaces.

The ground floor is a great space that flows into different areas. Starting with the lounge facing the front of the property. At the end of the hallway you have a downstairs WC. Then you a great flowing area that starts as you walk into the kitchen, wraps around to a dining area then into what is currently a study area. You also have internal access into the garage from the kitchen.

A large garden at the rear, offering a perfect space for outdoor activities, gardening, and enjoying the fresh air.

## Features

Moving upstairs you have three well-appointed bedrooms, each offering ample space and natural light, the main bedroom also has an ensuite shower room.

**SPACIOUS FAMILY HOUSE • 3 BEDROOMS,**

**PRINCIPAL WITH ENSUITE SHOWER • FAMILY**

**BATHROOM • DOWNSTAIRS**

**WC LOUNGE • SPACIOUS KITCHEN • 2ND**

**RECEPTION AREA • STUDY AREA • DRIVEWAY**

**PARKING FOR TWO CARS • LAID TO LAWN EAST**

**FACING BACK GARDEN • GARAGE**

## Council Tax Band

E

## EPC Rating:

D

